

# Port-O

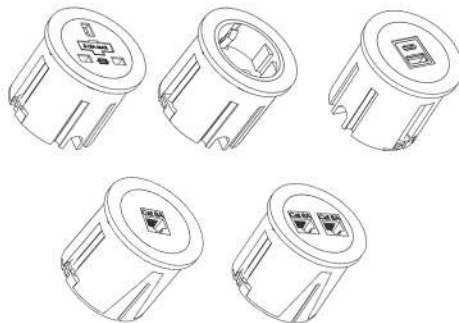
in desk power module



## USER

# MANUAL

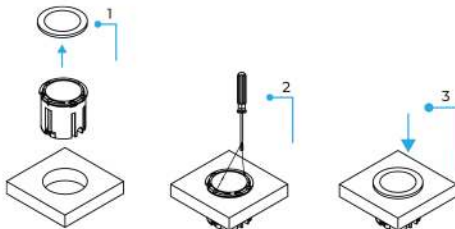
Thank you for purchasing ABL's Port-O power module. Port-O has been manufactured and tested in accordance with relevant standards (see contact page).



### INSTALLATION:

Make 54 mm cutout. Ensure that there is a sufficient clearance below surface and between the cut-out edge and the edge of the work surface.

1. Unclip the ring and place the module in the cutout
2. Turn the screw clamp clockwise till the fascia is flush with the surface
3. Secure the ring on the grommet fascia



### MAIN FEATURES:

- The module is available in Black or White, with Black profile
- Available in variations of UK socket, Schuko socket, USB charger and one or two media connections
- Rated voltage of Port-O power module unit is 250V AC (**G, F type socket**)
- Nominal intensity of the unit:
  - 3,15A or 5A for **G type socket**
  - 16A for **F type sockets**
- Power of Port-O with USB A+C charger:
  - 35 W Max (for USB A+C 35W)
  - 65 W Max (for USB A+C 65W)
- G type sockets are individually fused with 3.15A or 5A fuse.
- Fit into a 54 mm port hole, and desk thickness between 10 mm and 40 mm
- Locking ring enables quick installation and fitting with no effort

Contact us for more information.

### SAFETY NOTES:

- Items such as Vacuum Cleaners, Kettles, Coffee Makers, and Fan Heaters should not be connected via these power modules
- Installation is to be carried out by a qualified professional



www.abl-ltd.com



SCAN ME



Complies with BS 5733 (UK)  
IEC 60884-1 and IEC 60884-2-7 (Europe)



Manufacturing in-house within central  
Europe under strict compliance with  
ISO 9001:2015

## CONTENTS:

- Port-O  
power module



- Plastic ring



## WARRANTY CONDITIONS:

ABL warrants this product as free of defects in material, design, and workmanship for the period of twenty-four (24) months from the original date of receipt of the product, unless applicable national laws stipulate otherwise. If during the period of warranty this product proves defective under normal use and service you should return the product to the retailer from whom it was originally purchased. The liability of the ABL is limited to the cost of repair and/or replacement of the unit under warranty. The warranty is void if a failure occurs due to the following reasons:

- Improper device installation
- Improper handling
- Improper transport
- Force majeure



**WARNING: Do not use this product for any other purpose other than which it was designed for.**

## CONTACT US

### UK DISTRIBUTION CENTRE

Unit A6 Brooklands  
Technology Park,  
Wellingborough Road,  
Sywell, Northamptonshire,  
NN6 0BN, United Kingdom  
United Kingdom

+44 (0) 1933 400 080  
sales@abl-ltd.com

### EMEA DISTRIBUTION CENTRE

Lava Tolstaja 25  
32103 Cacak  
Serbia

+381 (0) 32 420 100  
sales@abl.co.rs

## MAINTENANCE:

Do not open, disassemble, change, or modify the device. Every unauthorized opening or repairing of the device leads to loss of warranty. During device usage, you need to follow basic safety measures, since safety requirements vary, please check with local laws.

